

# **Third Progress Report /** *Tercer Informe de Progresos*

## ***Protected Areas Thematic Network /*** ***Red Temática de Áreas Protegidas***



Period reported:

January – April 2007

Prepared by / *Preparado por:*

Fundação O Boticário

03/07/2007

1. **A executive summary section of progress to date and challenges and/or difficulties encountered to the date of the report in both Spanish and English;**

## **Participation in Technical Meetings**

---

The most significant achievement in this period came from the IABIN TI Expert Group meeting, held in Panama in March 2007. In this event, significant advances were made over the IABIN Network Architecture, especially at the interoperability between the each thematic network's data.

One result of this meeting, among others, was the following set of recommendations made by the TI experts group in order to guarantee that PATN data will be fully compliant with the IABIN Gateway standards and protocols, promoting the full and integrated access to all the Thematic Network's data.

IABIN TI Experts Group - Recommendations to PATN:

1. Adopt the WFS standard FOR geospatial PA data (maps);
2. Evaluate the adoption of an integrated solution with Ecosystem TN to host and access geospatial data;
3. Adopt the "WDPA Core Site Attributes" (WDPA Draft System Design Specification v 1.2) as a standard for PA data;
4. Adopt the IABIN Metadata tool that will be provided by NBII to IABIN, and register the PATN documents on this tool (PDF, EXCEL, DBs, etc.);
5. Define a "Management Effectiveness Core Site Attributes" as a standard and develop an appropriate tool to manage this data;
6. Evaluate the Protocol TAPIR and Web Services as standards to access PA data from Data Providers and make these data available to other IABIN TNs;
7. Provide the necessary data to build up the IABIN Catalog (common services) through the use of the Dublin Core standard for identifying relevant web-sites, images, publications, and other electronic materials.

Except the recommendation #4, all the recommendations were validated by the Consortium Board. The Metadata Tool proposal was updated by a proposal from the Von Humboldt Institute, which is under Evaluation.

In this meeting also, a proposed architecture was shown and approved by the IABIN IT Expert Group (Figure 1).

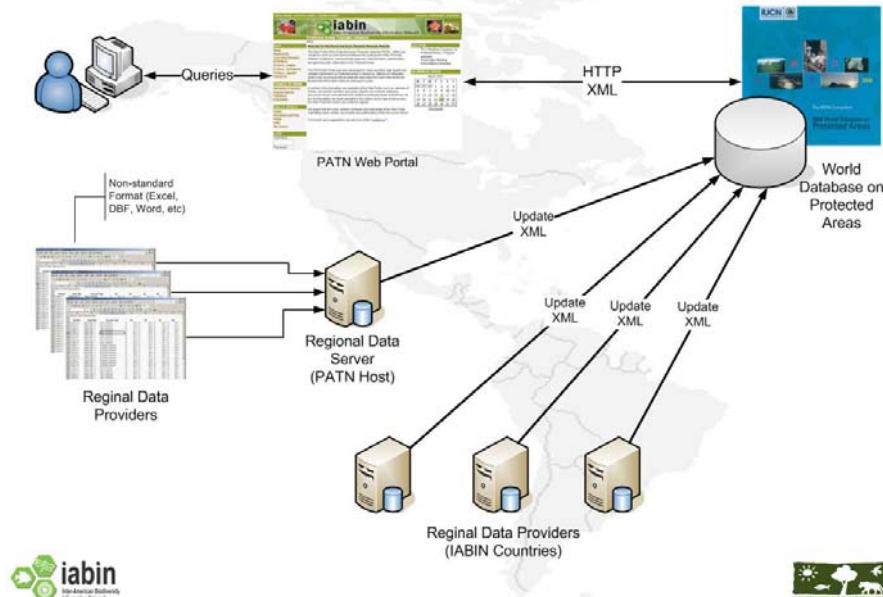


Figure 1 – PATN Proposed Architecture

The figure illustrates an overview of a PATN Architecture approach, together with the definition of the World Database on Protected Areas (WDPA) role in the PATN Architecture. The definition of the WDPA role was previously discussed with Dr. Charles Besançon, from UNEP-WCMC, and is compatible with the “WDPA System Designs Specifications V 1.2”.

As the result of the meeting also, the TI experts proposed an architecture to the whole IABIN, including the interoperability between the Thematic Networks, catalog and IABIN Gateway (Figure 2).

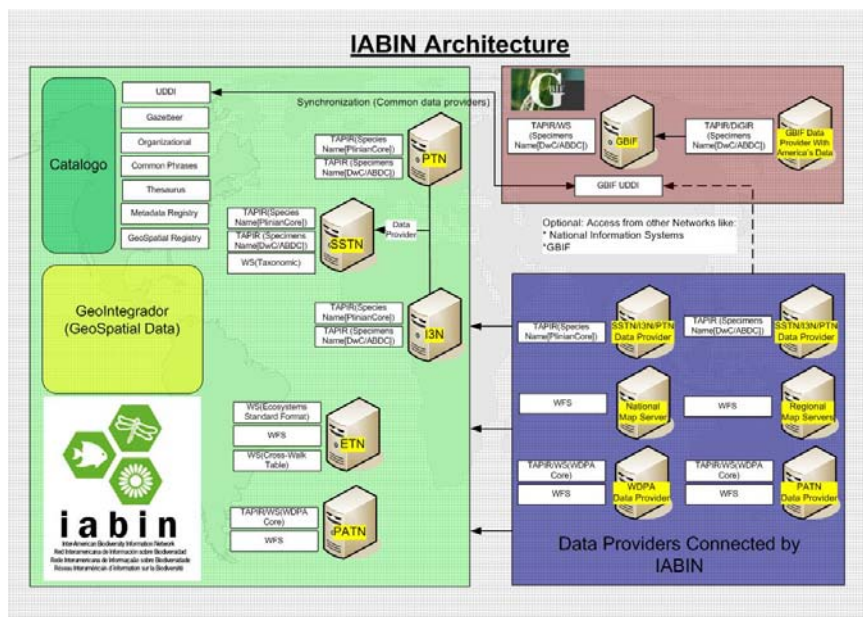


Figure 2 – Proposed IABIN Architecture

We consider the definitions of the architectures and basic standards and protocols the main achievement for the period.

In this period we've participated at an OAS meeting related with information tools for Protected Areas Managers. With the presence of several experts, demonstrating a number of interesting tools, the event had great value to PATN purposes.

## PATN Web Portal Metrics

Since last January we adopt Google Analytics as a Web Statistics Tool for the PATN Web Site (<http://www.google.com/analytics/>).

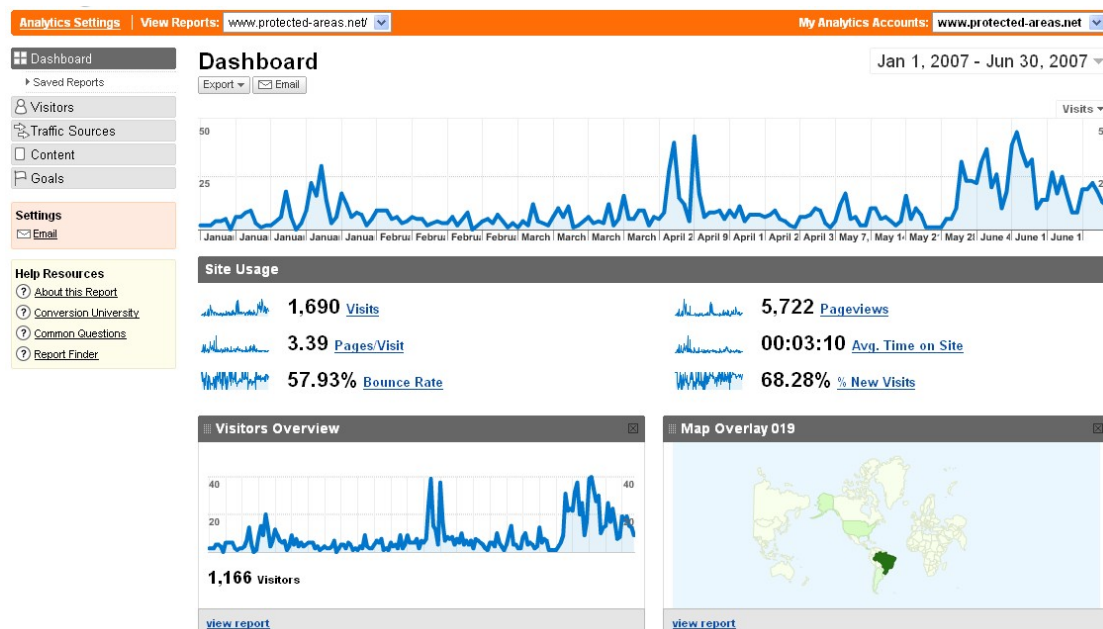


Figure 3 – Google Analytics Control Panel

Based on this tool, we've been monitoring the growth of the Web Portal access as show in the charts below:

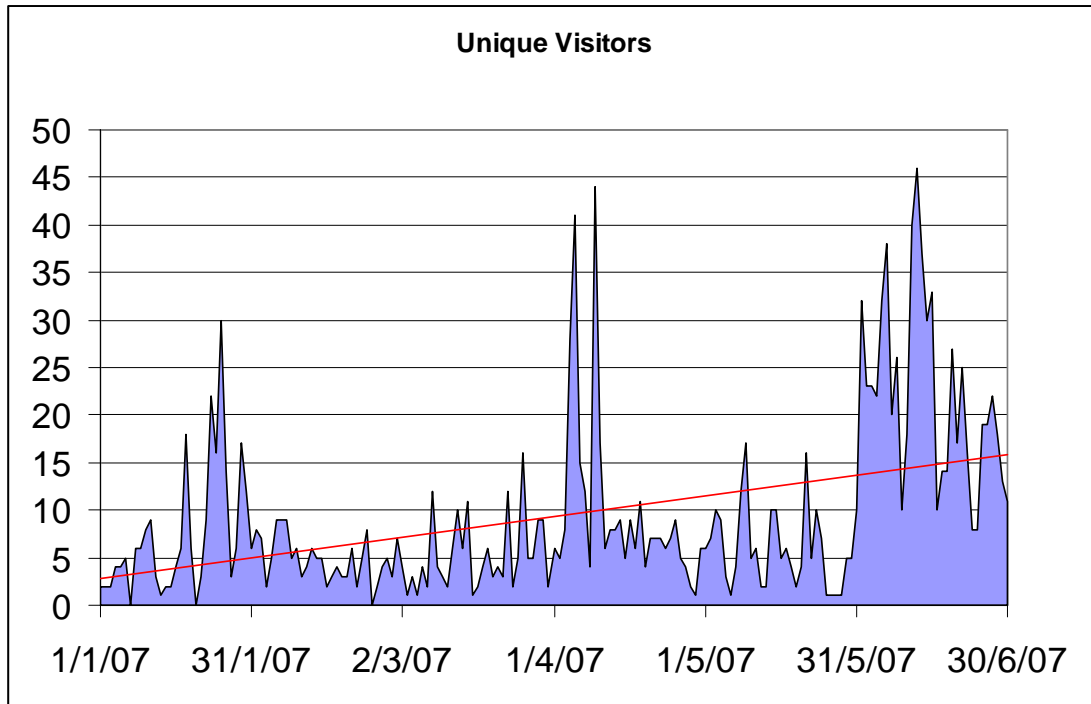


Figure 4 – Unique visitors and tendency line of visiting growth (in red)

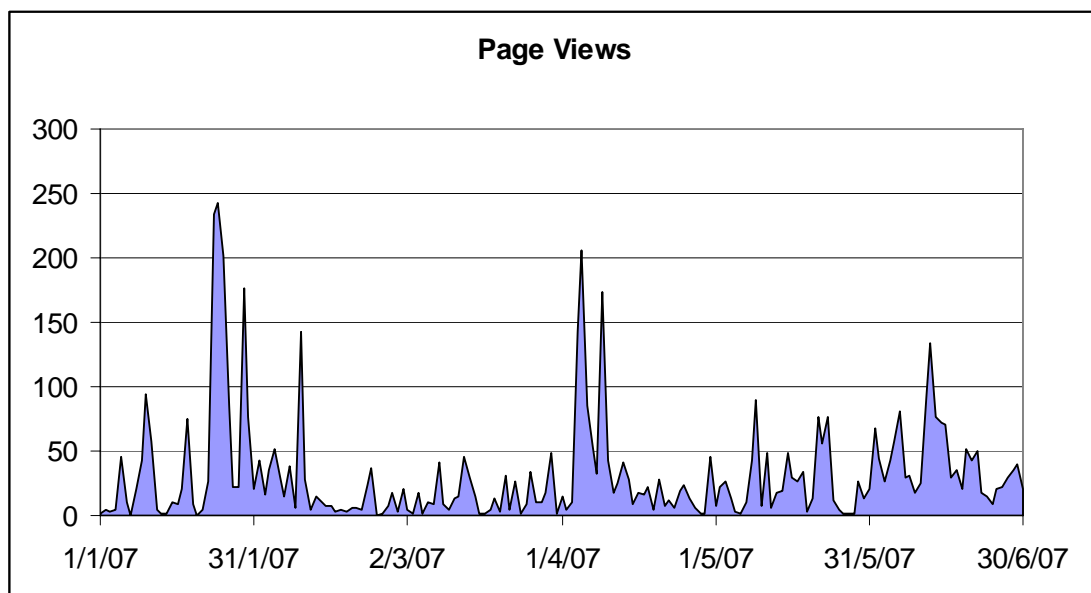


Figure 5 – Number of page views

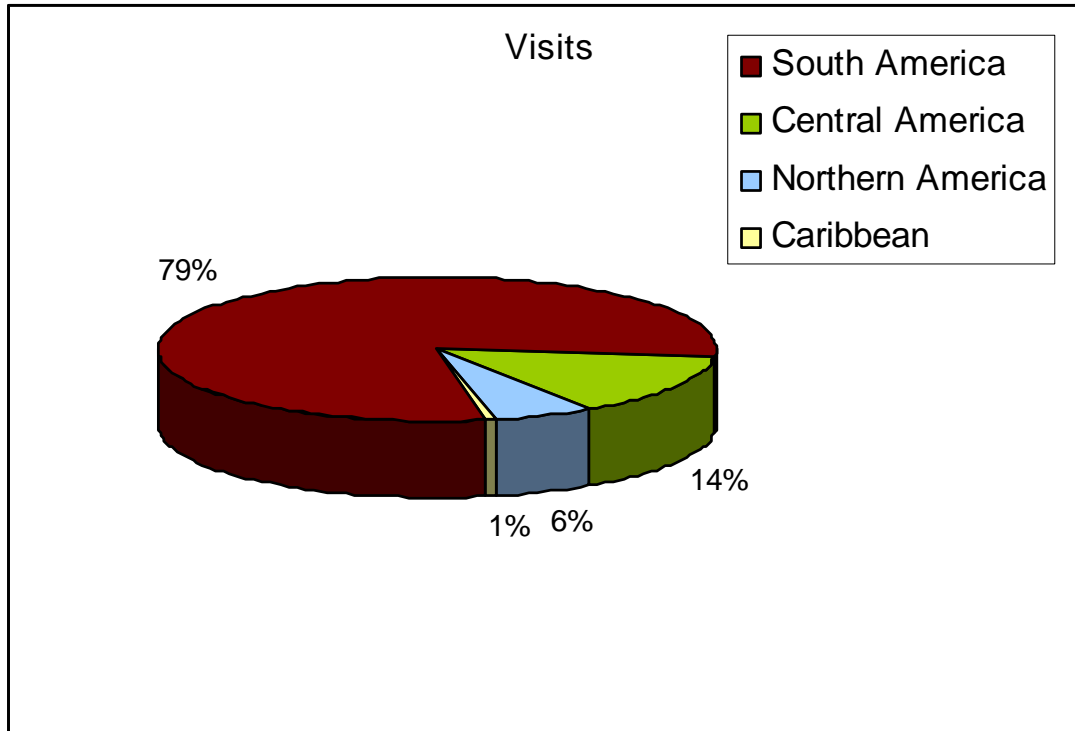


Figure 6 – Percentage of visitors, from 1st January to 30th June, by region

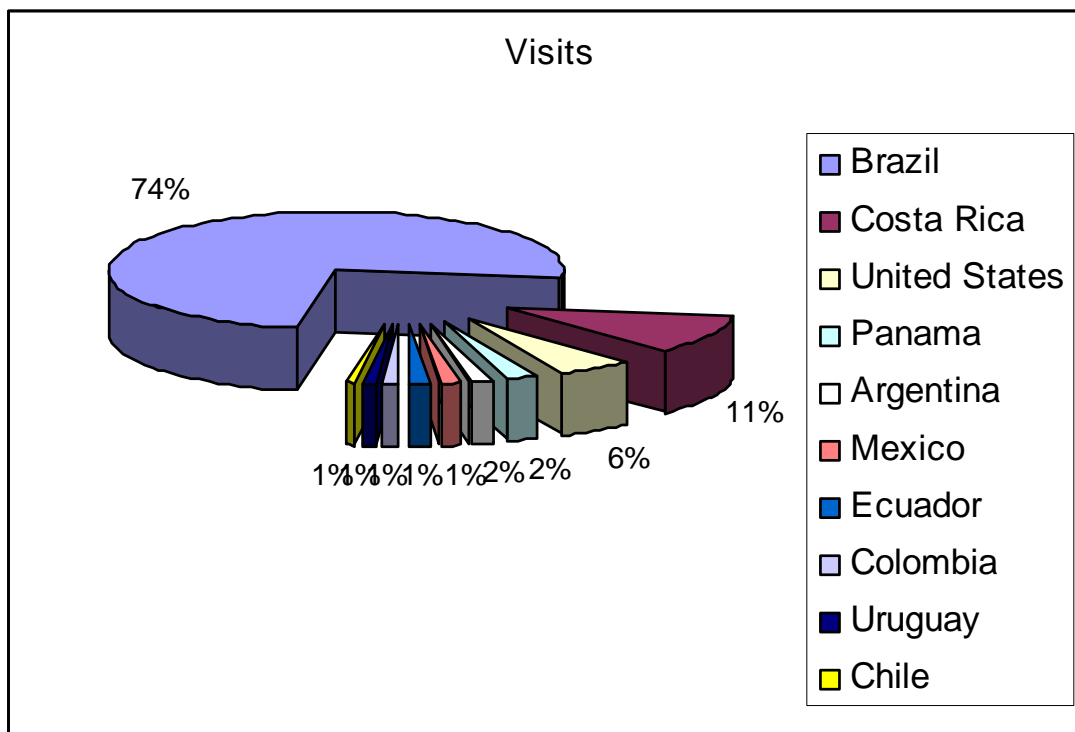


Figure 7 - Percentage of visitors, from 1st January to 30th June, by Country (Top 10)



---

## **Organization of the V Brazilian Congress on Protected Areas and II PATN Workshop**

---

The PATN Staff at Fundação O Boticário was deeply engaged at the organization of the V Brazilian Congress on Protected Areas, which will occur from June 17 to 21, and at the II PATN Workshop, which occur at 22-23 of June.

The Brazilian Congress on protected areas is among the most important events in Latin America dedicated to the subject of protected areas. Since its first edition in 1997, the event have brought globally renowned experts who, in five days of activities. The Congresses are also a great inspiration and motivation to those dealing with environmental issues. In 2007, the Congress will host the International Symposium on Nature Conservation, giving continuity to the II Exhibition on Nature Protection as well. The organization is expecting at least 1,800 participants from Brazil and other countries.

Therefore, a considerable amount of time of PATN Staff at this period was dedicated to the organization of both events.

### **2. Expected outputs and outcomes**

Based on our Annual Operational Plan for 2007, we have no expected outputs for this period.

### **3. Methodology employed and activities carried out**

There was no significant methodology employed at this period and the activities carried out were cited in the first topic of this report.

### **4. Results (in relation to components and expected outputs);**

Based on our Annual Operational Plan for 2007, we have no expected outputs for this period.

### **5. Lessons learned, problems and possible solutions;**

The participation at the IABIN events results on a significant increasing at the replies related with the Focal Points and Technical Representatives networking. After the participation of Antonio Cristiano Cegana and Eduardo Dalcin, as Coordinating Institution staff, at the “Taller Iberoamericano para el intercambio de información sobre biodiversidad con énfasis en colecciones biológicas”, at Bogota, Colombia, there was a increase of 13,2% at the contact with Focal Points and Technical Representatives.

### **6. Parallel Financing Summary Report**



---

The parallel financing report will be delivered at the semester report.

**7. Financial Monitoring Report (attached in Excel sheet)**