



OAS | **CICAD**



**INTER-AMERICAN DRUG ABUSE
CONTROL COMMISSION
CICAD**

**SIXTY-FOURTH REGULAR SESSION
November 19-21, 2018
Washington D.C., USA**

**OEA/Ser.L/XIV.2.64
CICAD/doc.2441/18
November 20 2018
Original: Spanish**

Implementation of National Drug Policies At Local and Municipal Levels in Jujuy

Implementation of national drug policies at the local and municipal levels in Jujuy

Lic. José Manzur

Secretario de Salud Mental y Adicciones



Gobierno de JUJUY

Ministerio de Salud

Secretaría de Salud Mental y Adicciones

Province of Jujuy



Population (2015)

727,780 inhabitants

Administrative division

16 departments

61 municipalities and municipal commissions

Area

53.219 km²

International geographic borders

Chile and Bolivia

Prevalence per year of licit substances use during 2017

	Argentina	Jujuy
Alcohol	68%	71,3%
Tobacco	31,3%	33,2%

Source: Argentina's National Study on Population from 12 to 65 years old on psychoactive substances use (2017).

Prevalence per year of illicit use of substances during 2017

	Argentina	Jujuy
Marijuana	7,8%	4,3%
Cocaine	1,5%	0,7%

Source: Argentina's National Study on Population from 12 to 65 years old on psychoactive substances use (2017).

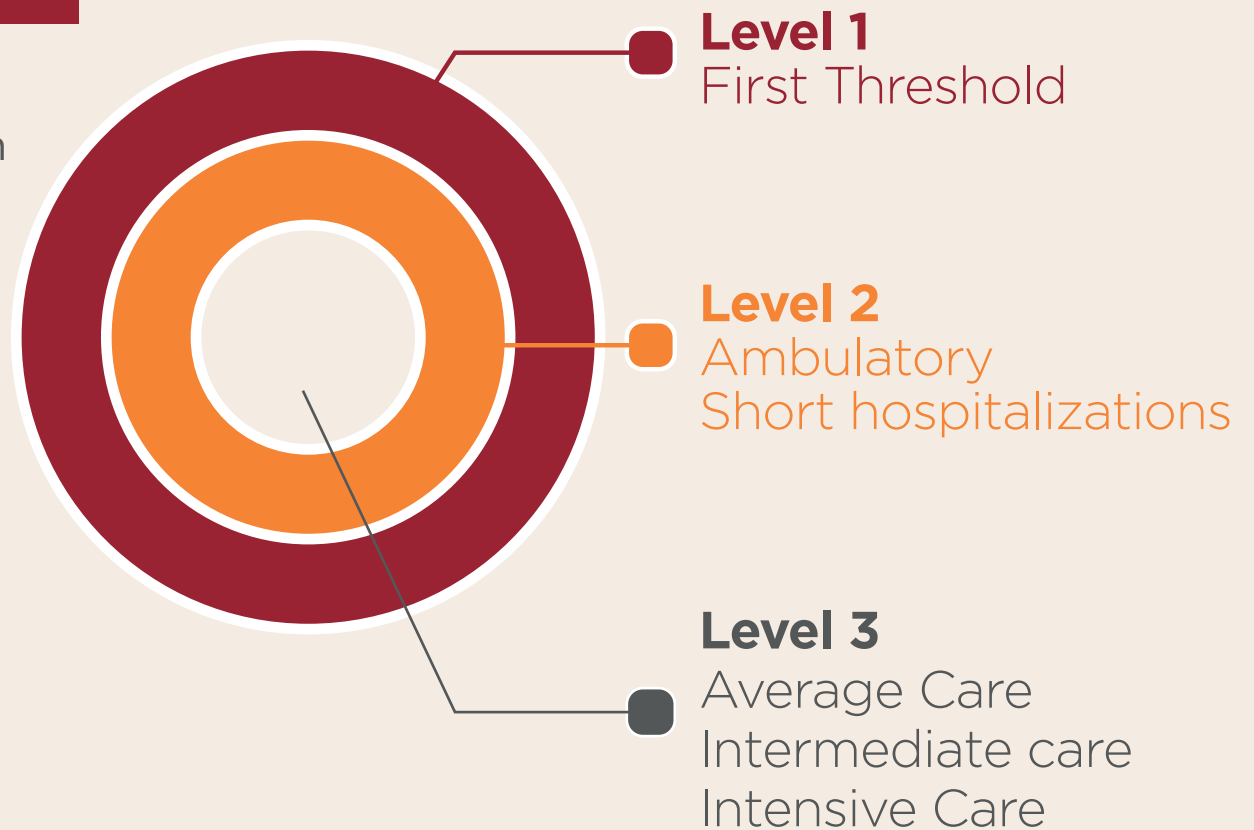
Systematization by levels of care

Provincial Network of Health, Mental Health and Addictions

Emergency Medical Care System (SAME), Mental Health, 107

Mental Health emergency room
Gallardo´s Hospital
[+15 years]

Mental Health Service
Maternal and child Hospital
[-15 years]



Provincial settings

Permanent settings

26 Hospitals

14 Operative Groups of Alcoholism

1 Penitentiary Service

Mobile settings

16 Psychiatrists

10 Psychologists

Settings in articulation

Articulation
Federal Government
Province
Municipality

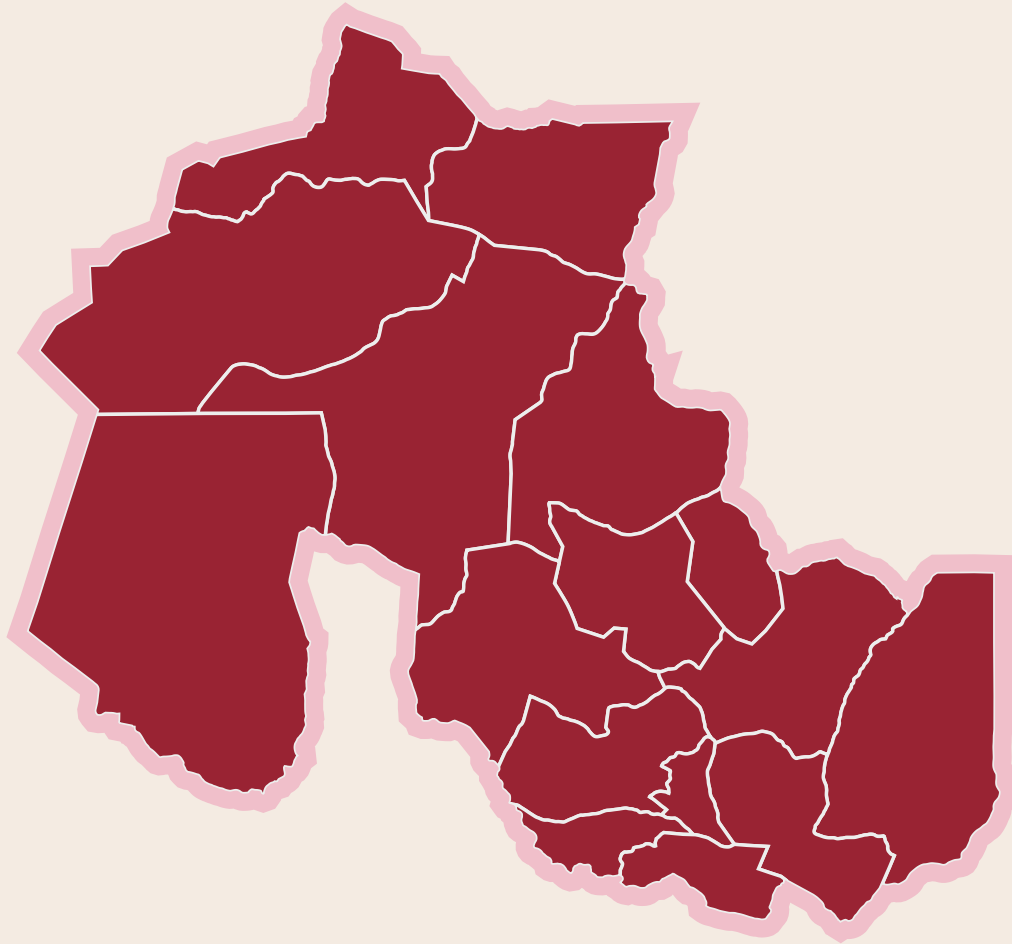
4 DIAT (+2 under construction)

1 Community
Treatment

1 Day Hospital

1 Day Clinic

Municipalities in Action Program

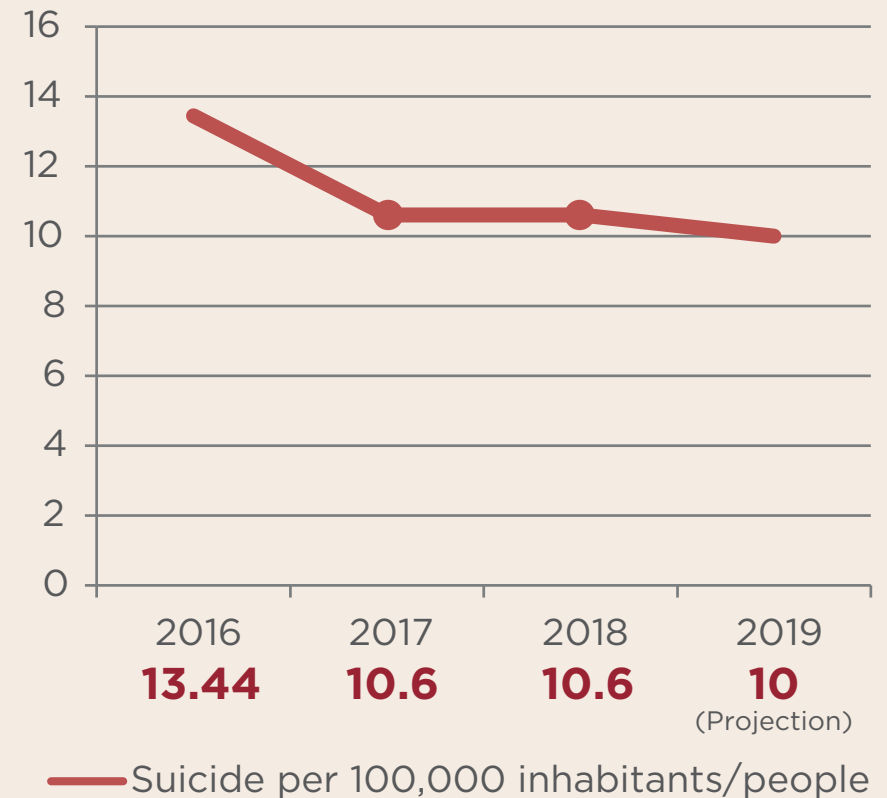


17 Municipalities
with funded projects

4 Municipalities
with plans under
development

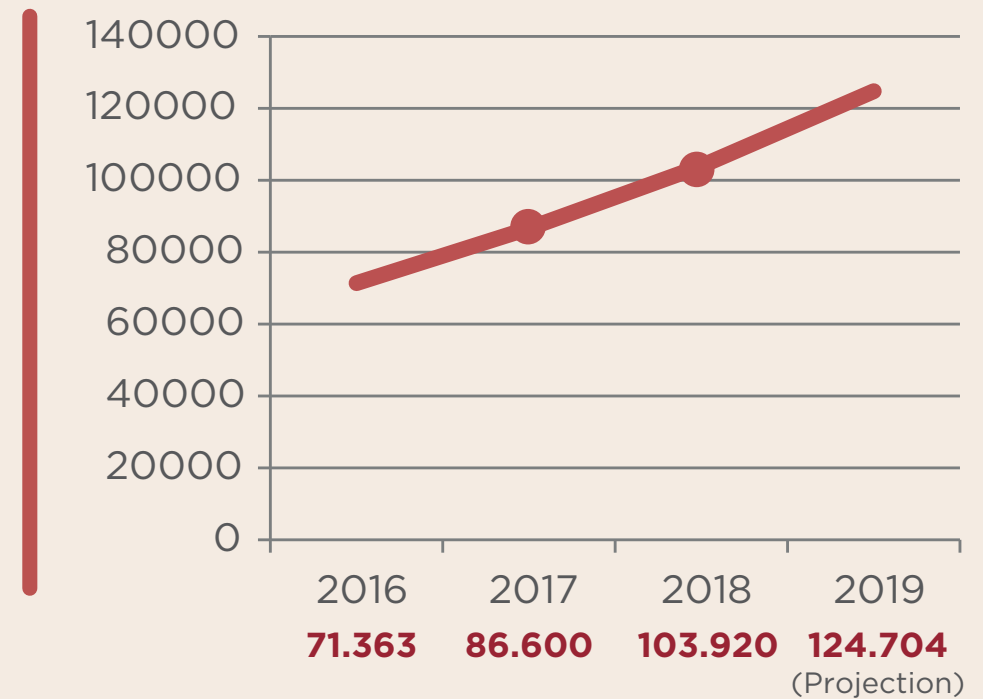
Decrease in the suicide rate

**Suicide rate per
100,000 inhabitants/people.**



Increase in consultations for Mental Health and Addictions

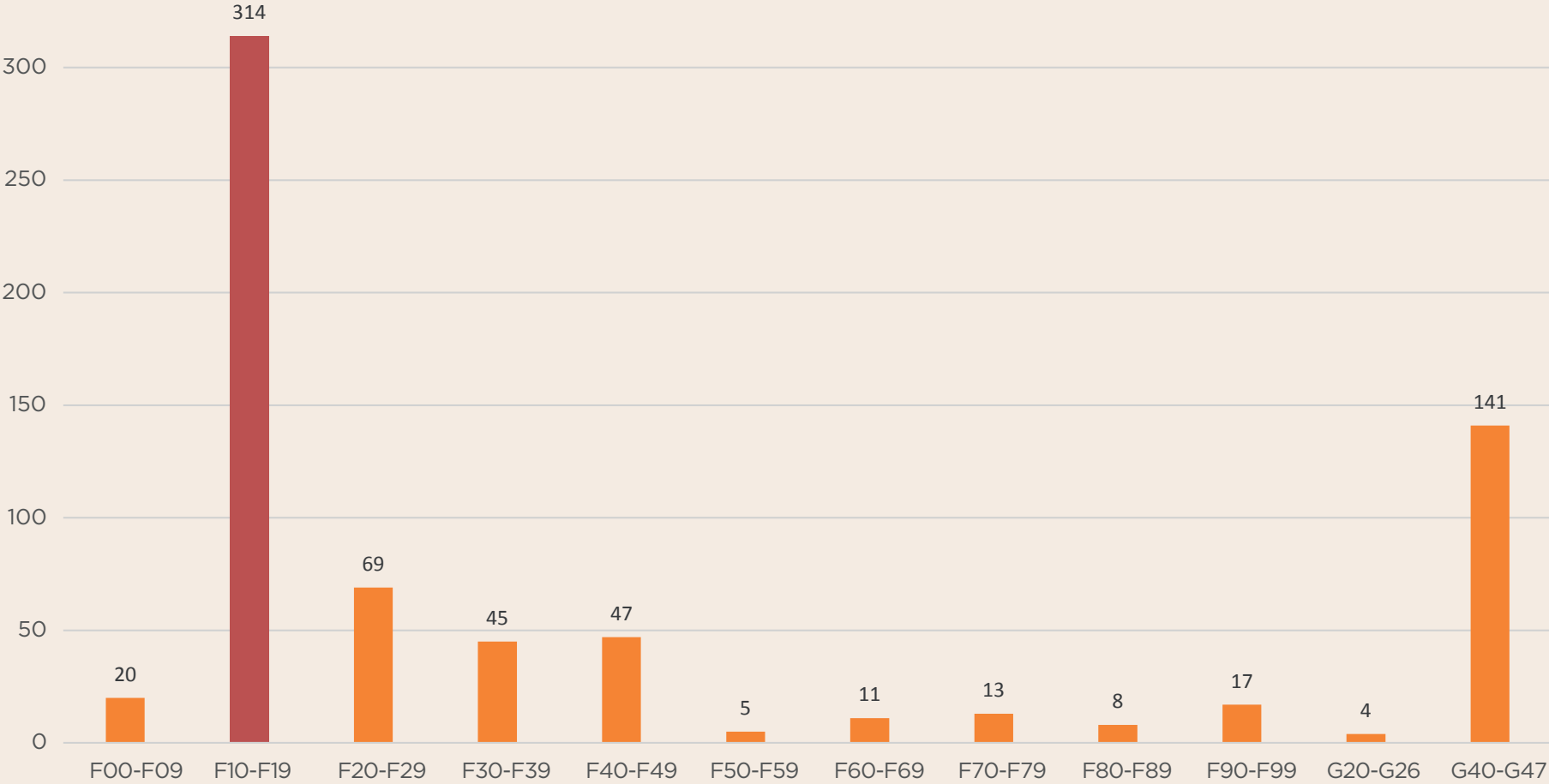
Outpatient consultations for Mental Health and Addictions



— Outpatient consultations for Mental Health and Addictions

Hospital discharge according to ICD-10 diagnosis

Mental and behavioral disorders due to psychotropics use





Video

Thank you