



EXPERIENCE IN THE COLLECTION OF INFORMATION ON DRUG SUPPLY

GUYANA

AGENCY RESPONSIBLE FOR SUPPLY STATISTICS

The National Anti-Narcotics Agency is the agency responsible for supply statistics, NANA was established by a cabinet decision in July, 2017 and became operationalized in October, 2017.

The agency falls under the Ministry of Public Security

NANA was developed to oversee the coordination of agencies responsible for the implementation of the National Drug Strategy Master Plan (2016-2020) and to develop evidence-based drug policies and programs.

The strategy focuses on the following areas:

- Demand Reduction
- Supply Reduction
- Control Measures
- Institutional Strengthening & Policy Coordination
- International Cooperation

The GUY-DIN is an inter-agency body consisting of key stakeholders from various agencies and NGOs working in the field of drug supply and demand reduction.



TYPES OF DATA COLLECTED

- Drug seizure, Arrest and Prosecution
 - Type
 - Quantity
 - Location
 - Agencies
 - Origin and destination
 - Number of person charged, cases made and convicted for possession trafficking and cultivation
 - -Gender and age

- Drug prices, others seizures related to drug offence, Eradication
 - Forensics testing
 - Drug price
 - Firearm seizures
 - Crop discovered and destroyed
 - Arrest and conviction
 - Suspicious Activity reports

INDICATORS AND METHOD USED, ANALYSIS PERFORMED

EXPERIENCE WITH SUPPLY INDICATORS USED BY NANA- GUYANA

Indicator Group	Indicators	Source	Data Gathering Method	Types of Analysis Conducted	How
Standard Indicators					
1. Drug Seizures	Quantity of each drug seized (kg and g) Number of drugs seizures Settings where operation occurred (location) Country of Origin Country of Destination	LEA: GPF-Narc, CANU, GRA- LEID:DEU, GPS	1. Raw data by incident is collected by agency. 2. Excel spreadsheet design to incorporate the standard indicators and requirement of the LEA's, GRA AND GPS	1. Basic frequency analysis on the monthly seizures prosecution and eradications of narcotics. 2. Trend analysis will also be conducted but due to discrepancies with past data, such analysis was halted until the necessary corrections are made in order to continue.	1. Weekly Reports and Monthly meetings --- This is reconciled at monthly meetings to ensure reports received matches the reports submitted and presented by the various agencies.
2. Arrest for Drug Offenses	Number of persons arrested for drug possession, trafficking, cultivation Type of drug Number of persons arrested for intent to supply Other drug offences as specified in domestic laws	LEA: GPF-Narc, CANU, and GPS			
3. Prosecutions for drug offences	Number of persons tried for trafficking, possession, cultivation Number of persons convicted	LEA: GPF-Narc, CANU, and GPS			

INDICATORS AND METHOD USED, ANALYSIS PERFORMED

Indicator Group	Indicators	Source	Data Gathering Method	Types of Analysis Conducted	How
Standard Indicators- Challenging to Collect					
4. Drug Prices	Prices in Dollars (by drug, local currency or US\$)	LEA: GPF-Narc, CANU, and GPS	1. Raw data by incident is collected by agency. 2.Excel spreadsheet design to incorporate the standard indicators and requirement of the LEA's, GRA AND GPS	1.Basic frequency analysis on the monthly seizures prosecution and eradications of narcotics. 2. Trend analysis will also be conducted but due to discrepancies with past data, such analysis was halted until the necessary corrections are made in order to continue.	1. Weekly Reports and Monthly meetings ----This is reconciled at monthly meetings to ensure reports received matches the reports submitted and presented by the various agencies.
	Factors influencing change in drug prices				
5. Other seizures related to drug offences	Firearm seizures	GPF			
	Money Seizures	SOCU			
	Building Seizures				
	Vehicles Seizures				
6. Illicit Drug Production	Measures of the level of production of drugs	-			
	Drug crop areas discovered and destroyed	GPF- Narc			
	Quantity of seized precursors	-			
	Number of illicit laboratories discovered	-			

INDICATORS AND METHOD USED, ANALYSIS PERFORMED

Indicator Group	Indicators	Source	Data Gathering Method	Types of Analysis Conducted	How
Optional Indicators					
7. Drug Related Crime	Characterization of the relationship between drugs and crime (survey)	-	Questionnaires (last survey done in 2010 at NOC)		Survey
8. Purity of Drugs	Degree of purity of drugs seized	GFSL	TBD		
9. Number of Deportee related to drug offences	Number of people who are deported for illegal drug problems in foreign countries	GPF-CID	TBD		
10. Suspicious activity Report	Number of suspicious activity reports Number of suspicious activity reports to drugs	FIU	Agency submits reports to our LEA meetings		twice a year at Monthly meetings
11. Arrest for Money Laundering	Number of persons arrested for money laundering	SOCU	TBD		
	Number of persons arrested for money laundering related to drugs				

TYPES OF REPORTS PRODUCED

- Narcotics Seizures and Prosecution monthly and quarterly Report
- GUYDIN ANNUAL REPORT

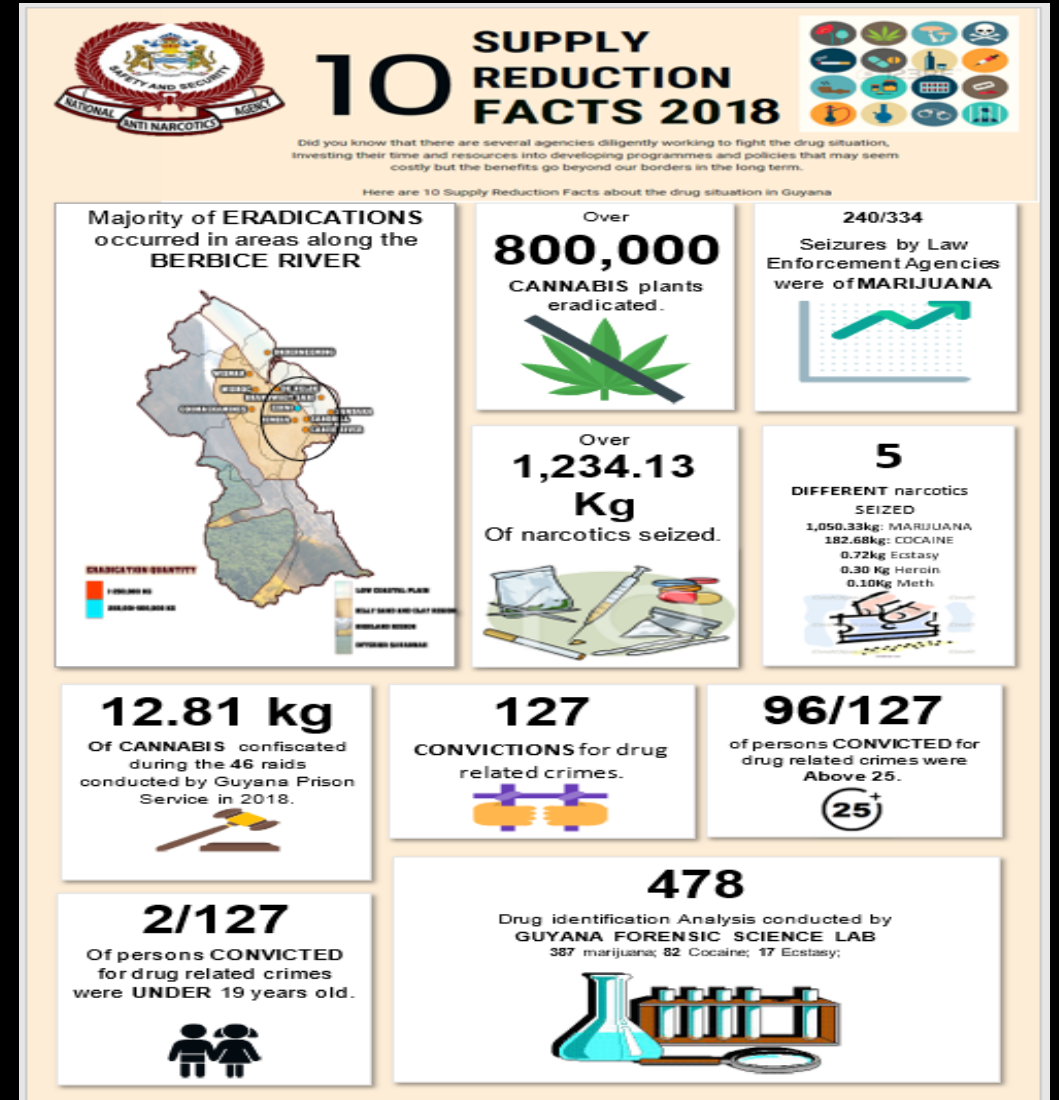
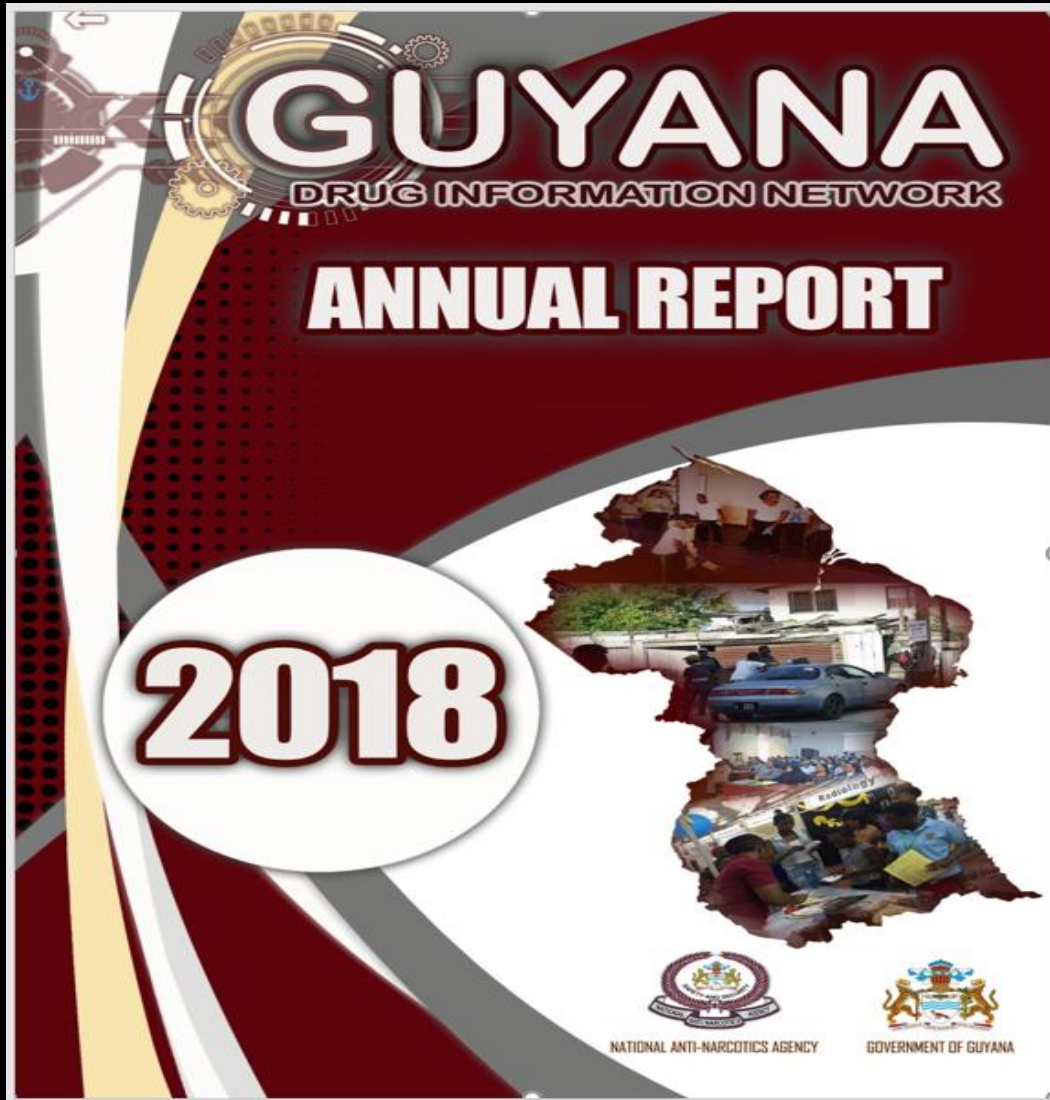


GPF and CANU												
TOTAL NARCOTICS SEIZED FOR PERIOD MAY 1-31, 2019												
Narcotics Seized by Law/Drug Enforcement Agencies												
Drugs	GUYANA POLICE FORCE				CUSTOMS ANTI -NARCOTIC UNIT				TOTAL NARCOTICS SEIZED AND PROSECUTION			
	Quantity seized (g)	Persons Charged	Cases Made	Completed	Quantity seized (g)	Persons Charged	Cases Made	Completed	Quantity seized (g)	Persons Charged	Cases Made	Completed
Cannabis(g)												
Cocaine (g)												
Heroin(g)												
Ecstasy(g)												
Hashish (g)												
Meth (g)												
TOTAL (G)	-	-	-	-	-	0	0	0	-	0	0	0
TOTAL (KG)	-				-				-			

HOW INFORMATION IS USED BY STAKEHOLDERS

1. Stakeholders are engaged in weekly and monthly meetings where the reports are presented, the information is then used to guide policy development, types of training needed, operations to be conducted along with providing international bodies with info on the current situation in Guyana and what is needed.
2. Regional and International bodies may request specific information to include in regional and global reports.

DIN REPORT AND SUPPLY FACTS 2018





THANK YOU