



**La justicia
es de todos**

Minjusticia

Early Warning Sistem - SAT

Drug Observatory of Colombia

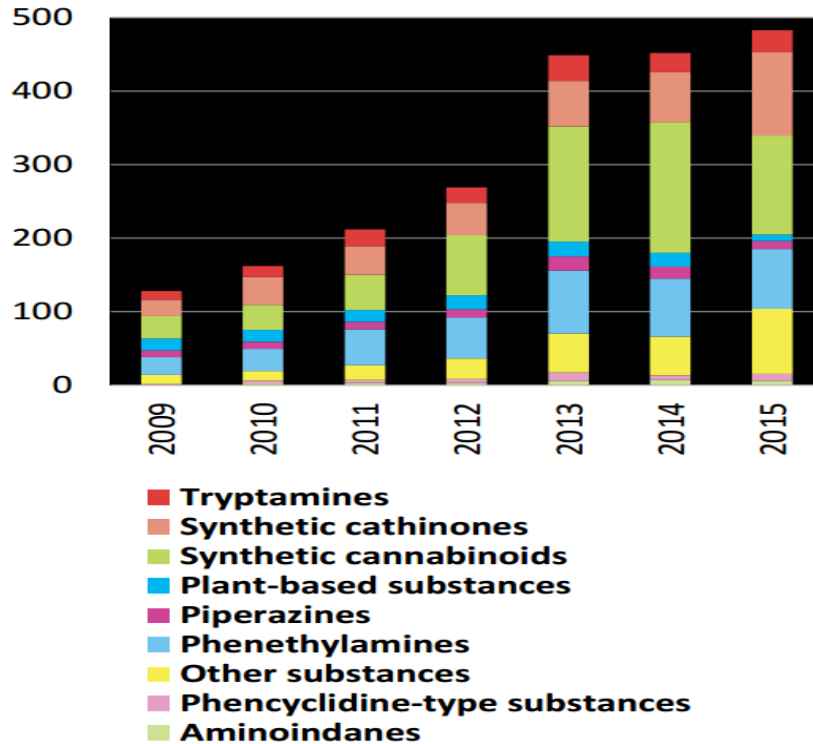
Ministry of Justice and Law

**XX CICAD Demand Reduction Expert Group Meeting,
CICAD/OEA, Cartagena de Indias, August 25, 2019.**

CONTENT

1. Context of NPS
2. Early Warning System ODC Colombia
3. New detected psychoactive substances and other SAT findings
4. SAT and public policy challenges

1. CONTEXT OF NPS



- NPS expanding globally. Currently more than 988 NPS.
- Most synthetic, new or newly reappearing drugs that imitating the effects of illicit drugs.
- They are not included in international treaties. They are sold online and in regular commerce.

Source: UNODC, 2019.

NEW PSYCHOACTIVE SUBSTANCES - NPS

Cannabinoides sintéticos

Actúan en receptores agonistas de cannabinoides, los cuales producen efectos similares a los del delta-9-tetrahidrocannabinol (THC), el principal componente psicoactivo de la cannabis. Los cannabinoides sintéticos son generalmente encontrados en productos herbales y vendidos bajo el nombre de Spice, K2, Kronic, etc.



Catinonas sintéticas

Actúan con antagonismo de la sustancia interacción/receptorizada catinona, uno de los componentes activos de la planta Khat. Generalmente liberan efectos estimulantes e incluyen NBP, ropax, das, Flociclatina, Salto como metadona y MCV (metamfetamina sintética).



Ketamina

Es un anestésico humano y veterinario que actúa como un estimulante en dosis bajas y como un alucinógeno en dosis altas. En uno de los NPS más comunes en Asia.



Fenetilaminas

Este grupo contiene sustancias relacionados con la fenetilamina y metanfetamina y generalmente produce efectos estimulantes. Sin embargo, la modificación de estos compuestos puede dar lugar a potentes psicodélicos como el Desoxi-Dragonfly.



NPS

Categorías de las nuevas sustancias psicoactivas vendidas en el mercado

Otras sustancias

Tales como amfetaminas (adulteradas), sustancias de tipo benzodiazepinas (alucinógenas) y psicodélicos (alucinógenos).



Este grupo incluye plantas con propiedades psicoactivas. Las más frecuentemente reportadas son:

- Kratom (*Mitragyna speciosa* Kuntze) es una planta nativa de Sudeste Asiático que contiene el alcaloide mitraginina, un estimulante en dosis bajas y sedante en dosis más elevadas.
- Salvia divinorum, es una planta utilizada de las etnias temicaneas en Chiapas, México, que contiene el principio activo salvinorina A, una sustancia psicoactiva.
- Khat (*Catha edulis*), es una planta utilizada de las etnias somalíes en Etiopía, Somalia, que contiene el principio activo khatina A, una sustancia psicoactiva.
- Ehat (*Catha edulis*), es una planta nativa de la región del Cuerno de África y la península arábiga. Las hojas de la planta se muelen, lo que resulta en la liberación de los estimulantes catinona y catina.

Sustancias de origen vegetal



Estas sustancias se venden frecuentemente como "bath salts", debido a sus propiedades estimulantes del sistema nervioso central. Los ejemplos más comúnmente reportados de este grupo son benzilpiperatina (BZP) y MCV (metamfetamina sintética).

Piperazinas

- ✓ Sustancias of abuse that are not controlled by the Conventios.
- ✓ Because of the limited knowledge about them, they are strongly associated with health problems.
- ✓ They pose a threat to public health.
- ✓ Se conocen como They are known as "designer drugs", legal euphorizers, euphorizin herbs, bath salts, legal alternatives.

EMERGING DRUGS

Substances that have health risks:



- Changes in patterns of use of controlled drugs
- Changes in purity
- Dangerous adulterants
- Mixtures

**NATURAL
AUDITED
NEW**



OR NOT

2. EARLY WARNING SYSTEM

- The Early Warning System – SAT of the Colombian Drug Observatory – ODC, focuses to reduce the impact of NPS and emerging substances from timely detection, risk assessment and the generation of reliable information addressed to authorities and the community.

-

The ultimate SAT's objective is to prevent or reduce the risks associated with the use of these types of substances, from a public health perspective. ***

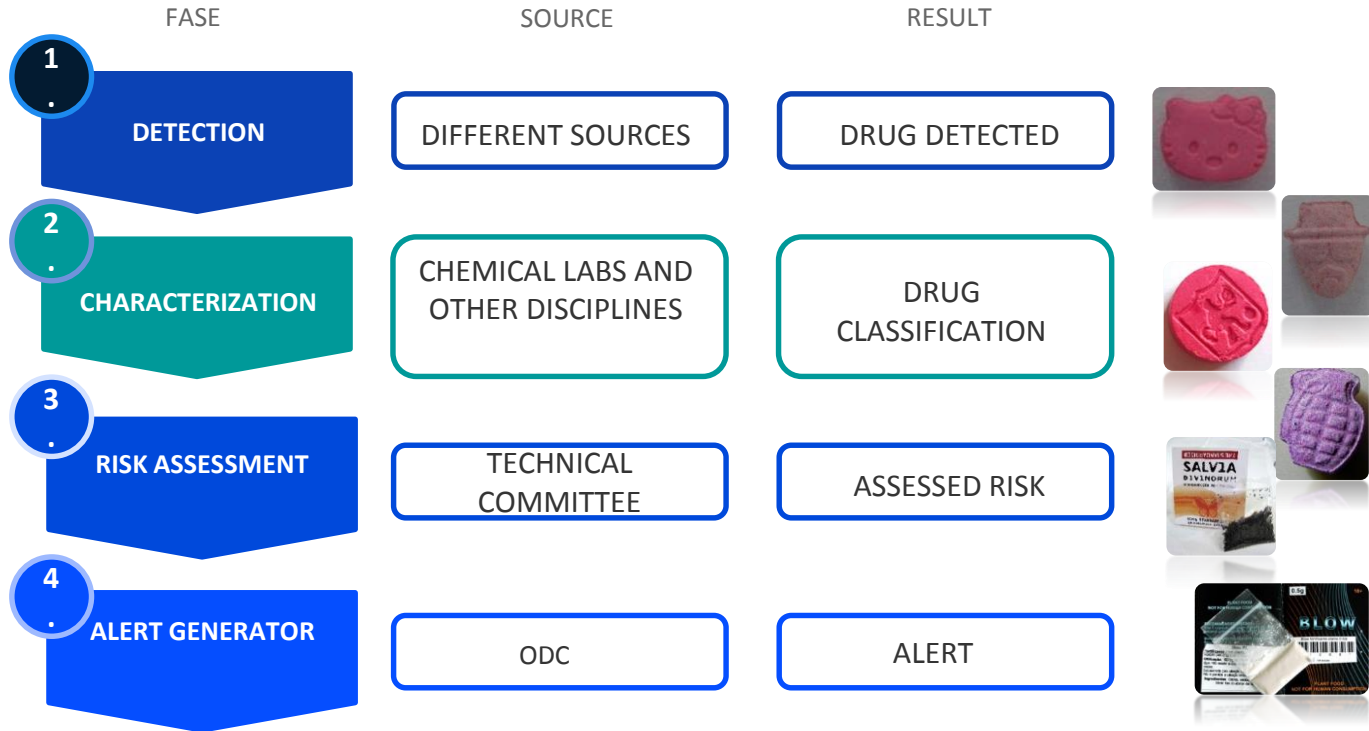
RED DE INFORMACIÓN

Sistema de Alertas Tempranas SAT

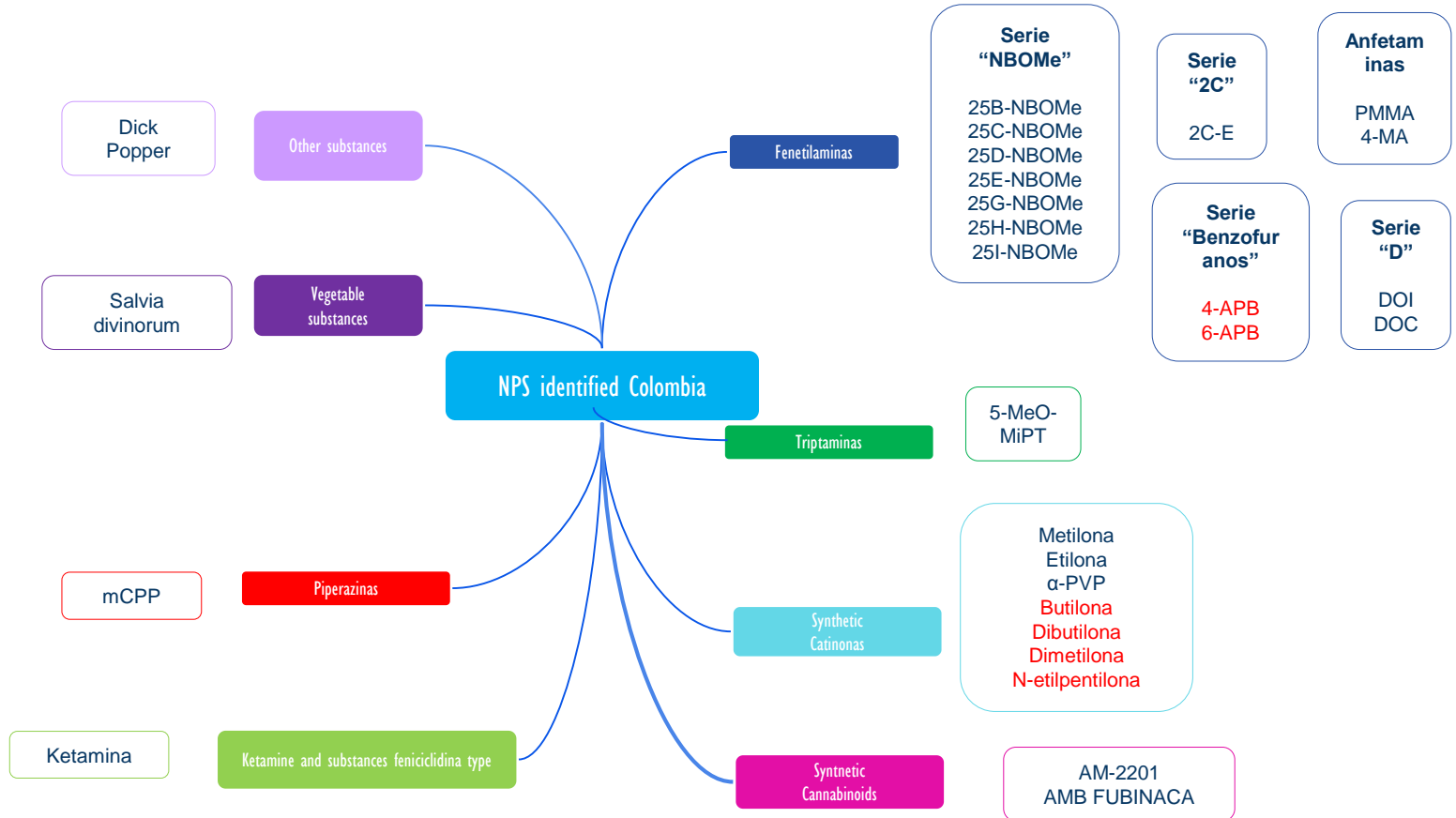


SAT OF COLOMBIA
CREATED IN 2013

FASES



3. NPS DETECTED IN COLOMBIA



FINDINGS

NBOME

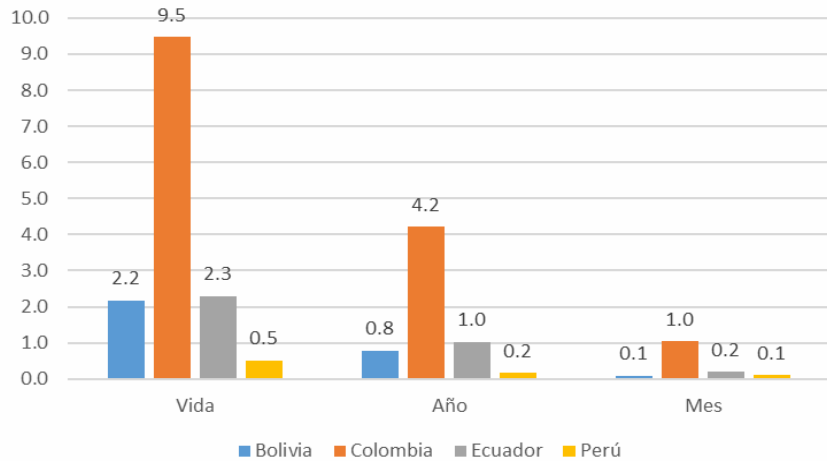


25B-NBOMe
25C-NBOMe
25D-NBOMe
25E-NBOMe
25G-NBOMe
25H-NBOMe
25I-NBOMe

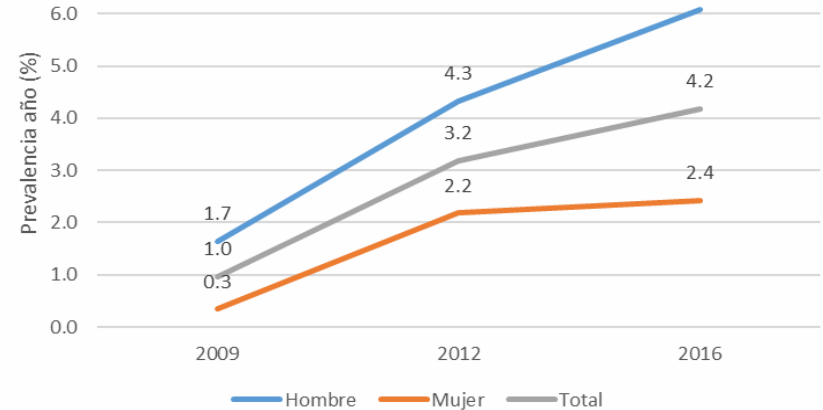
In 2013, the Colombian SAT detected the presence of two molecules of the NBOMe group in commercialized samples such as LSD in Bogotá, Pereira and Armenia.

Currently it is common to find fake LSD with substances of this group.

LSD consumption indicators by country



Prevalence trend year of LSD use, by sex and age



- 9,5% of Colombian university students have used LSD.
- Recent LSD consumption among Colombian university students is 4,2%.
- Colombia has much higher LSD consumption rates than Bolivia, Ecuador and Perú.
- Recent LSD consumption increased from 3,2% in 2012 to 4,2% in 2016, This increase is statistically significant for men, with 4,3% in 2012 and 6,1% in 2016.

MIXTURES/BLENDS

PRODUCT 1
Main component:
Amphetamine

Amphetamine
Methamphetamine
to
MDA
MDMA

PRODUCT 2
Main component:
Amphetamine

MDMA
Ketamine
Dibutylona

PRODUCT 3
Main component:
benzofurano
6-APB

Methamphetamine
to
Methylone
Dimetilona
Dibutylona

PRODUCT 4
Main component:
Benzofurano

6-APB
Methylone

PRODUCT 5
Main Component:
Synthetic
Cathinones

Methylone
Dimetilona
Dibutylona
4-APB

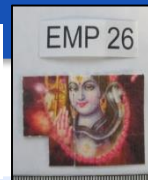
PRODUCT 6
Main component:
Serie 2-C

MDA
2-CB
Cocaine
Caffeine

Groups of NPS

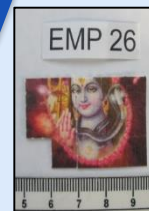
- Amphetamine type
- Ketamine and substances pheniclidine type
- Synthetic cathinones
- Benzofuranos type
- 2-C Type

EFFECTOS ADVERSOS DE LAS NPS EN COLOMBIA



CASO	CIUDAD	SUSTANCIAS DETECTADAS EN SANGRE, ORINA O GÁSTRICO	INTERPRETACIÓN DE LOS HALLAZGOS
Caso 1	Bogotá	25C-NBOMe	Indica consumo de 25C-NBOMe
Caso 2	Bogotá	Midazolam, OH-Midazolam, Ketamina y Norketamina	Indican consumo de Midazolam y Ketamina
Caso 3	Bogotá	Ketamina	Indican consumo de Ketamina
Caso 4	Medellín	Ketamina y Norketamina	Indican consumo reciente de Ketamina
Caso 5	Bucaramanga	25C-NBOMe	Indica consumo de 25C-NBOMe
Caso 6	Cali	25C-NBOMe, 25I-NBOMe y Tramadol.	Indican consumo 25C-NBOMe, 25I-NBOMe y Tramadol

ADVERSE EFFECTS OF THE NPS IN COLOMBIA



CASE	CITY	SUBSTANCES DETECTED IN BLOOD, URINE, OR GASTRIC	INTERPRETATIOIS OF THE FINDINGS
Case 1	Bogotá	25C-NBOMe	indicates consumption 25C-NBOMe
Case 2	Bogotá	Midazolam, OH-Midazolam Ketamina y Norketamine	indicates consumption Midazolam Ketamine
Case 3	Medellín	Ketamine	indicates consumption Ketamine
Case 4	Medellín	Ketamine y Norketamine	indicates recent consumption Ketamine
Case 5	Bucaramanga	25C-NBOMe	indicates consumption 25C-NBOMe
Case 6	Cali	25C-NBOMe, 25I-NBOMe Tramadol	indicates consumption 25C- NBOMe, 25I-NBOMe Tramadol

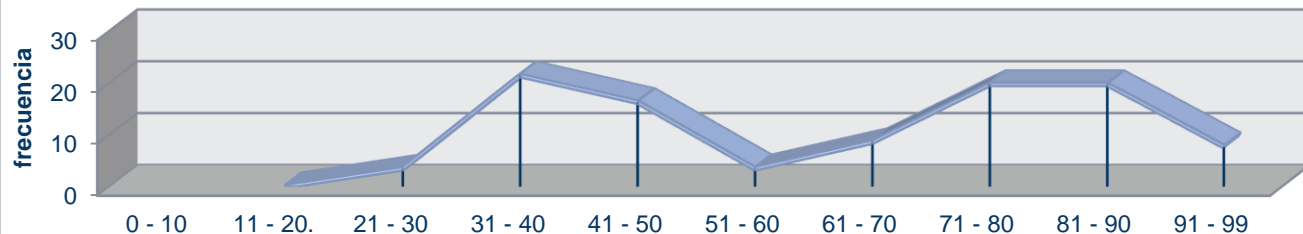
RESULTS

Chemical analysis study
of drugs

- ✓ Cocaine
- ✓ Cannabis
- ✓ Sythetic drugs
- ✓ Heroine



Ranges of heroin purity expressed in percentage



4. Public policy challenges on the NPS issue

Legal response

Forensic capacity for NPS
identification

Monitor /SAT

Prevention



¿Why an Early Warning System?

Monitor the situation of NPS and emerging drugs. Making informed decisions to generate public policy responses.

The main challenge principal is to use the information for the authorities and to prevent or reduce risks (public health perspective).

People in the core of public policy.



**La justicia
es de todos**

Minjusticia